

Templeton, CA



BENNETT
— R A N C H —



Estate Living in the Heart of Wine Country

Generous lots and small-town charm

Estate-style living at its best, just minutes from Templeton's historic downtown, with expansive lots from 21,000 to 32,000 square feet for exceptional privacy and space.

Single family homes with ADU add-ons

Fourteen spacious, thoughtfully designed homes featuring premium finishes and a luxurious yet comfortable feel, with optional ADUs for guests or extended family.

Unique Central Coast experiences

From outdoor adventures and award-winning wine and dining to cultural experiences or pure relaxation, this vibrant region is a treasure waiting to be explored.



BENNETT

RANCH



Preliminary

BENNETT

RANCH



Plan 2
Preliminary

BENNETT

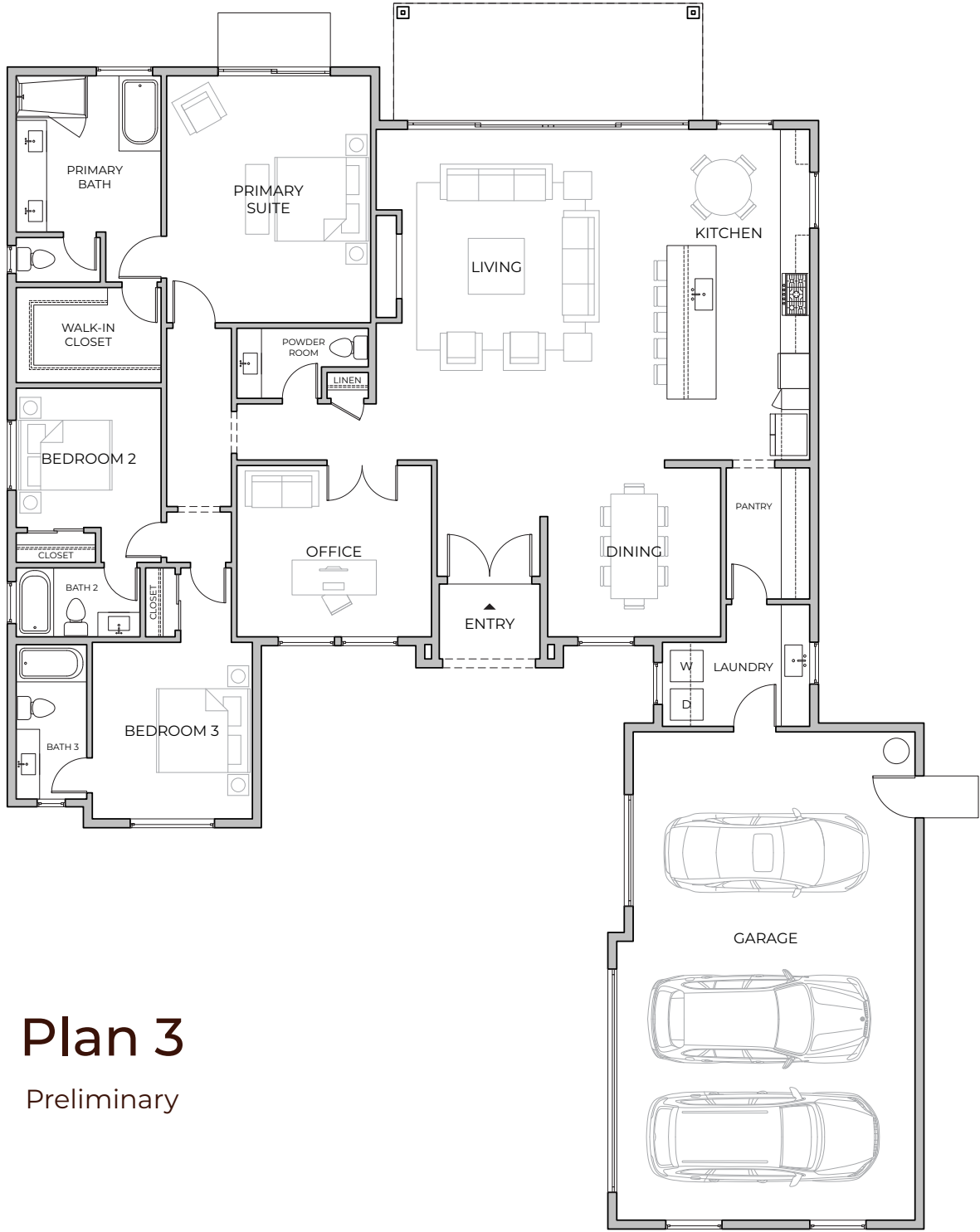
RANCH



Plan 2
Upgrade Ensuite + Office
Preliminary

BENNETT

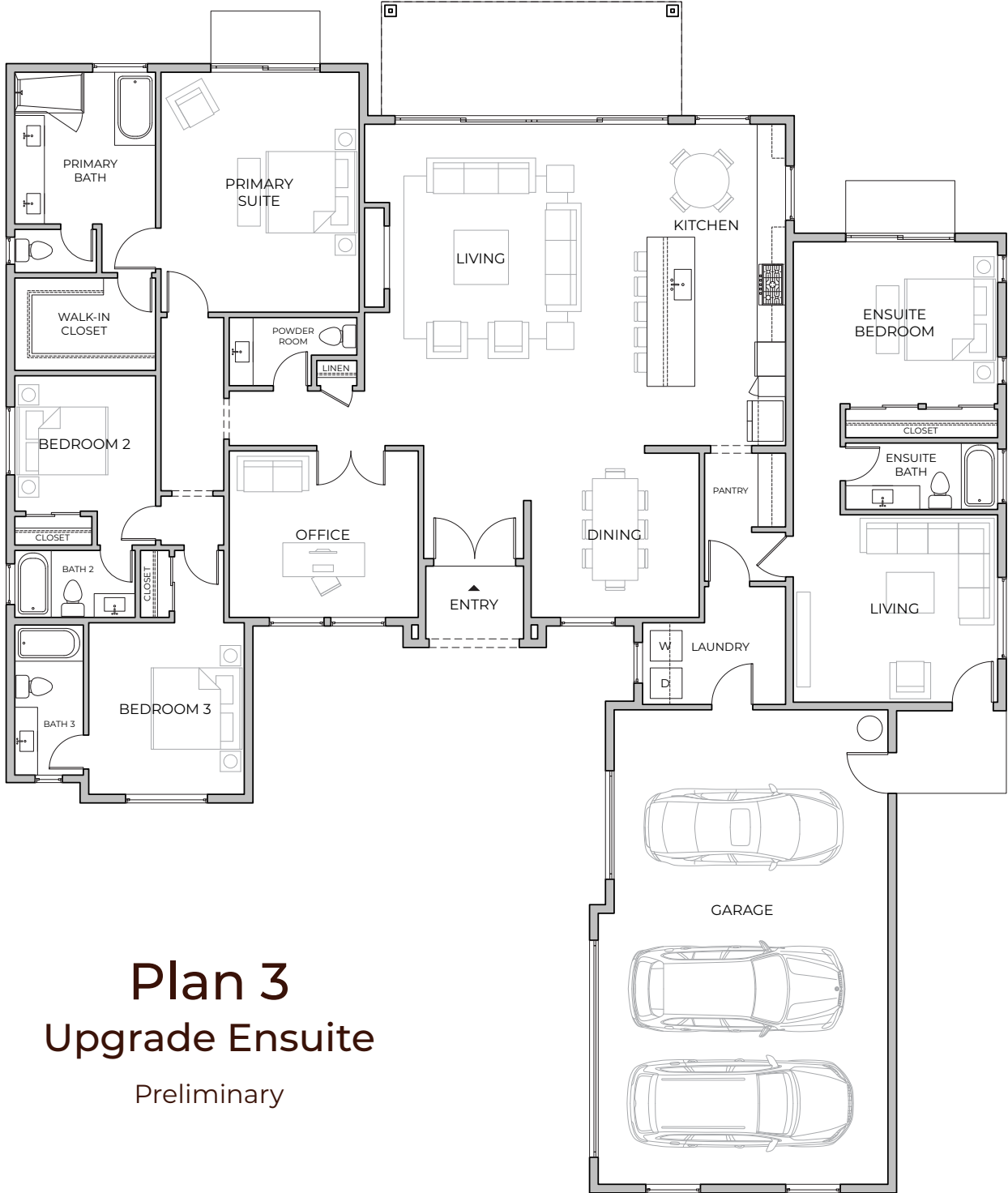
RANCH



Plan 3
Preliminary

BENNETT

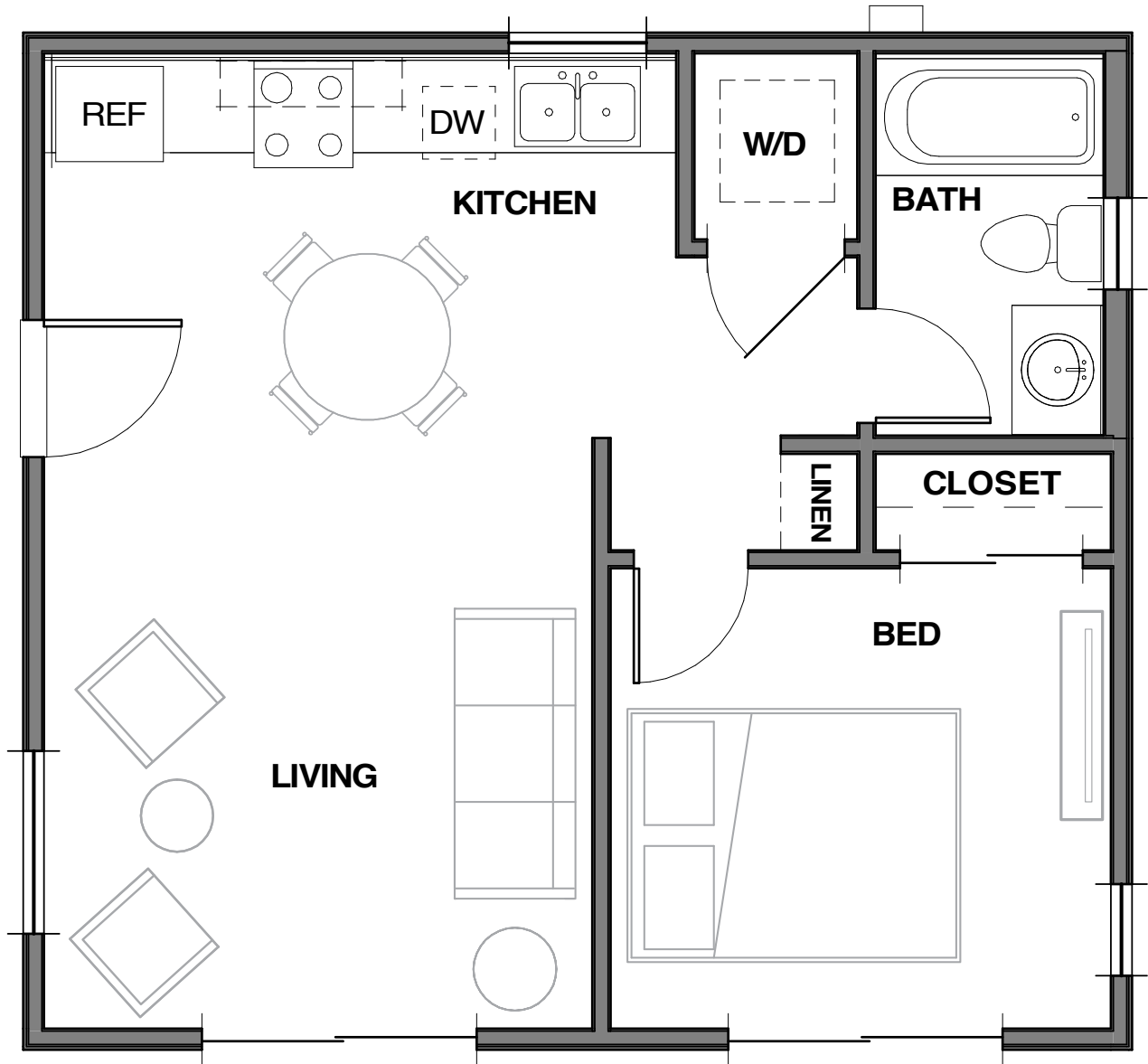
RANCH



Plan 3
Upgrade Ensuite
Preliminary

BENNETT

— R A N C H —



ADU
528 Square Feet
Preliminary



Welcome to
the warmth of
Bennett Ranch



BENNETT

— R A N C H —



Learn More & Join the List:
CCB.Homes/BennettRanch
Contact Terri Gibbs at Terri@CCB1.net or
805.556.7321

CCB | Coastal
Community
Builders

DRE #01268745

DRE #01266964 | CSLB #738515